



New York City Architectural Styles  
The 19th Century Row House

Illustrated Talk  
Olivia and Christopher Brazee  
November 10, 2014



**Federal**  
1800-1835



**Characteristics**

- Modest scale and simple architectural ornament inspired by ancient Greek and Roman architecture.
- Two to three stories high with basement and attic half-story with dormer windows.
- metal or slate peaked roof.
- Brownstone base with red brick upper facade (laid in Flemish bond).
- Low stoop with wrought-iron handrails, fence, and newels.
- Six- or eight-paneled wood entrance door, sometimes with a leaded transom, sidelights, and colonnettes.
- Six-over-six double-hung wood windows (often flanked by paneled shutters).
- Stone window sills and paneled stone window lintels.
- Classical wood cornice with dentils, modillions, and moldings.

**Representative Districts**

Greenwich Village

Brooklyn Heights

Fraunces Tavern Block

Charlton-King-Vandam

South Street Seaport

**Recommended Field Trip**

Willow Street, Brooklyn Heights Historic District

Grove Street, Greenwich Village Historic District

## Greek Revival 1830-1850



### Characteristics

- Simple and bold architectural elements, imitating Greek motifs.
- Three to three and one-half stories high with basement, sometimes an attic story below the cornice.
- Brownstone base with brick upper facade (laid in English bond).
- Stoop of medium height with wrought- or cast-iron handrails, fence, and newels.
- Vertical paneled wood door.
- Grand entrance pilasters, sidelights, and stone enframements.
- Six-over-six double-hung wood windows, six-over-nine often on the parlor floor, and sometimes small.
- Attic windows.
- Modest molded stone window lintels and sills.
- Wood dentiled cornice.

### Representative Districts

Greenwich Village  
Gramercy Park  
Chelsea

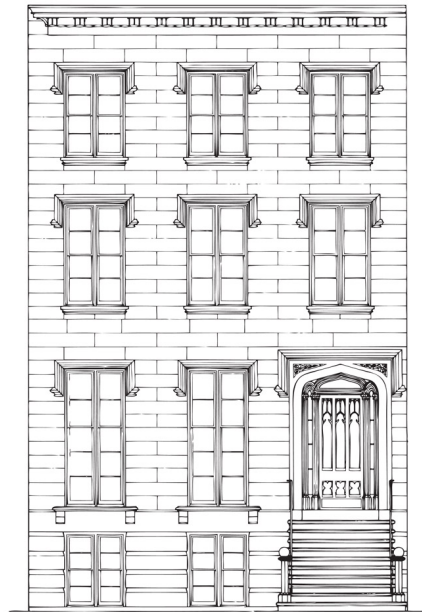
Brooklyn Heights  
Cobble Hill  
South Street Seaport

Stone Street  
Fraunces Tavern Block  
Fulton Ferry

### Recommended Field Trips

The Row, Washington Square North, Greenwich Village Historic District  
Cushman Row, West 20th Street, Chelsea Historic District

## Gothic Revival 1840-1860



### Characteristics

- Architectural elements inspired by organic and natural forms, medievalism, and the picturesque.
- Bold, projecting ornament.
- Three stories plus basement.
- Flat roof.
- Brick with brownstone trim or full brownstone facade.
- Stoop of medium height with cast-iron handrails, fence, and newels with elaborate gothic motifs.
- Recessed doorway with paneled wood door with pointed arches and occasional trefoils or quatrefoils.
- Door surmounted by horizontal hood molding or low Tudor arch or combination of the two with foliated spandrel carving.
- Picturesque hooded stone window lintels.
- Multi-paned double-hung wood windows or multi-paned wood casement windows.
- Plain Greek Revival style or boldly projecting Italianate style cornice.

### Representative Districts

Brooklyn Heights

Wallabout

### Recommended Field Trips

Willow and Hicks Street, Brooklyn Heights Historic District

## Italianate

1840-1870



### Characteristics

- Elaborate, bold, projecting ornament with an emphasis on repetitive forms.
- Two to four stories high with brownstone basement.
- Usually a full brownstone facade.
- High and wide stoop with elaborate cast-iron handrails, balusters, fence and newels.
- Deeply recessed doorway with heavily protruding door hood and console brackets.
- Round-headed double-leaf doors with heavily molded arched panels.
- Large double-hung two-over-two or one-over-one windows, sometimes with heavy muntins to imitate casement windows.
- Heavy, projecting stone window lintels and sills (sometimes resting on brackets) or full window enframements.
- Heavy, imposing, projecting cornice, embellished with moldings and supported by rectangular or scroll-shaped brackets.

### Representative Districts

Gramercy Park

Chelsea

Madison Square North

Murray Hill

Brooklyn Heights

Cobble Hill

Fort Greene

Clinton Hill

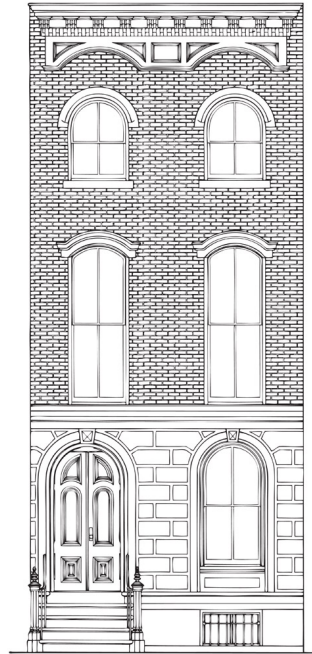
Tribeca

SoHo-Cast Iron

### Recommended Field Trips

South Oxford Street and South Portland Avenue, Fort Greene Historic District

## Anglo Italianate 1840-1860



### Characteristics

- Three to five stories high.
- Narrow width.
- Rusticated brownstone basement and first story with smooth brownstone or brick upper facade.
- Low stoop.
- Round-headed, double-leaf wood door with arched panels.
- Round-arched door surround.
- Square-headed, round-arch, or segmental-headed window openings.
- Two-over-two, one-over-one, or multi-paned wood windows.
- Simple brownstone window lintels and sills.
- Bracketed cornice with recessed panels and an arched fascia.

### Representative Districts

Greenwich Village  
St. Mark's

Gramercy Park  
Chelsea

### Recommended Field Trips

The Triangle, Stuyvesant and East 10th Street, St. Mark's Historic District

## Second Empire 1860-1875



### Characteristics

- Similar to Italianate style.
- Three to five stories high.
- Brownstone facade.
- Wide stoop with classically-inspired iron handrails, fence, and newels.
- Mansard roof (usually slate with iron crestings).
- Doorway with stone pilasters, consoles, and segmental arched pediment.

### Representative Districts

Fort Greene

Clinton Hill

### Recommended Field Trips

Washington Park, Fort Greene Historic District

**Neo Grec**  
1865-1885



**Characteristics**

- Extremely stylized, classical details, angular forms, and incised detailing formed by mechanical stone cutting.
- Three to five stories high with basement.
- Brownstone and/or brick facade with simplified ornament, including single-line incised cuttings in the stone.
- High stoop with massive, heavy angular cast-iron handrails, fence, and newels, massive door hood and enframement with angular decorative elements resting on stylized brackets.
- Double-leaf wood entrance doors with angular ornament.
- Stylized, angular incised window surrounds.
- Two-over-two or one-over-one double-hung windows.
- Projecting angular bays.
- Projecting wood or metal cornice resting on angular brackets.

**Representative Districts**

Upper East Side districts  
Upper West Side districts  
Mount Morris Park

Hamilton Hgts/Sugar Hill  
Mott Haven  
Park Slope

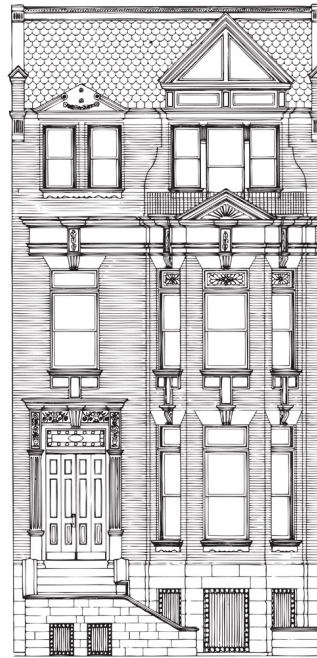
Prospect Heights  
Bedford Stuyvesant

**Recommended Field Trips**

Lenox Avenue, Mount Morris Park Historic District



## Queen Anne 1870-1890



### Characteristics

- Asymmetric massing of forms and details.
- Contrasts of varied materials, colors, and textures.
- Eccentric details, often with Classical or Renaissance precedents and often mixed with Romanesque Revival-style forms.
- Use of terra cotta.
- Three-sided projecting bay windows.
- Whimsical juxtaposition of window pane size, usually double-hung windows with small paned upper sash.
- Wrought-iron used at doorways and railings.
- L-shaped stoops or straight stoops.
- Multi-paned wood doors.
- Gable roofs covered with tiles or slate and featuring dormers and chimneys.

### Representative Districts

Upper East Side districts  
Upper West Side districts  
Mount Morris Park

Mott Haven  
Park Slope  
Prospect Heights

Bedford Stuyvesant  
Crown Heights  
Prospect Park South

### Recommended Field Trips

7th Avenue at Sterling Place, Park Slope Historic District

## Romanesque Revival 1880-1900



### Characteristics

- Heavy forms, asymmetry, and polychromatic materials, and a straightforward use of materials and expression of structure.
- Tonal and textural juxtaposition of materials: rock-faced brownstone, granite, limestone, elongated red, yellow, and brown brick, and terra cotta.
- Use of permanence of stone to evoke sense of solidity.
- Byzantine-style carved ornament.
- Spiny, interlaced vegetal forms, abstract patterns, and grotesque human and animal heads.
- Massive arches.
- Deeply recessed round-arched door and window openings.
- Multi-paneled wood double doors.
- Elaborate stained-glass transom lights.
- Spanish tile roofs.

### Representative Districts

Upper East Side districts  
Upper West Side districts  
Mount Morris Park

Park Slope  
Prospect Heights  
Bedford Stuyvesant

Crown Heights

### Recommended Field Trips

Decatur Street, Stuyvesant Heights Historic District  
Dean Street, Crown Heights North Historic District

## Renaissance Revival 1880-1920



### Characteristics

- Simple, restrained Renaissance design forms, and an interest in classicism.
- Two to three stories high.
- Brownstone, limestone, or light-colored brick facade.
- Subdued Classical ornament concentrated around door and window openings.
- Applied detail includes motifs of wreaths, baskets of fruit, and garlands of flowers.
- L-shaped stoop, often with two landings.
- Entrance surround features a full stone enframement.
- Wood double-leaf doors with glazed openings, sometimes with iron grilles.
- Simple iron cornice with Renaissance-inspired ornament.

### Representative Districts

Upper East Side districts  
Upper West Side districts  
Mount Morris Park

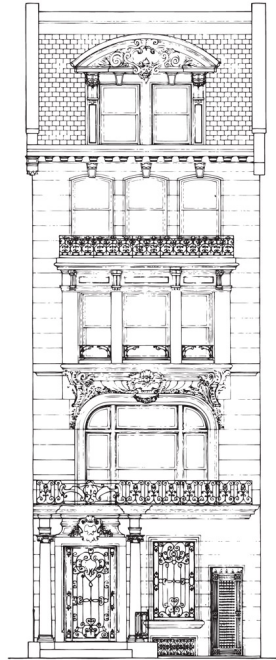
Hamilton Hgts/Sugar Hill  
Mott Haven  
Park Slope

Prospect Heights  
Bedford Stuyvesant  
Crown Heights

### Recommended Field Trips

Blocks near Grand Army Plaza and Prospect Park, Park Slope Historic District

## Beaux Arts 1890-1920



### Characteristics

- Academic classicism, symmetry of design, and an ordered, uniform appearance.
- Five stories high.
- Steep mansard roof with ornate dormers, or flat or low-pitched roof.
- White marble, limestone, or a light color brick facade.
- Bold, three-dimensional stone carving.
- Use of cartouches as ornament.
- Lacks high stoop. entrance door is one or two steps above the sidewalk.
- Main floor is often one floor above the entrance and usually has large windows with balconies.
- Double-hung and casement wood windows.
- Curved or three-sided projecting bay windows.
- Sheet metal cornice with console brackets embellished with friezes.

### Representative Districts

Upper East Side districts      West End Avenue/  
Upper West Side districts      Riverside Drive districts

### Recommended Field Trips

East 60s between Fifth and Madison Avenues, Upper East Side Historic District

## Colonial Revival 1880-1930



### Characteristics

- Characterized by the use of colonial design motifs, a combination of elements from the Federal and Greek Revival styles.
- Symmetrical red brick facade laid in Flemish bond.
- High stoop or simple steps. stone trim around doorway and windows.
- Six or eight paneled wood door with leaded fanlight or rectangular sidelights and transom.
- Simple iron handrails and fences.
- Multi-pane double-hung wood windows.
- Classical details often include urns, festoons, and broken pediments.
- Delicate, slender moldings.
- Simple cornice.

### Representative Districts

Upper East Side districts

Upper West Side districts

Crown Heights North

### Recommended Field Trips

Park Avenue, Upper East Side Historic District

West 74th Street, Upper West Side-Central Park West Historic District